



Brimstone on Red Campion

Field Trips

To be arranged



Juvenile Swallows at Hickling Broad

2024-25

Evening Meetings

April 29 2024

AGM followed by
North Norfolk coast wildlife
David North

May 20 2024

When Birds Sing
Saffron Summerfield

June 24 2024

Bat talk
Jane Harris

September 30 2024

Wildlife photography with a local
approach
Alan Dixon

October 28 2024

Looking for the Goshawk
Conor Jameson

November 25 2024

Birding Trinidad & Tobago
Steve Cale

December 16 2024

Bugs on the Move
Ian Bedford

and Christmas social



Great White Egret and Little Egret at Hickling Broad

January 27 2025

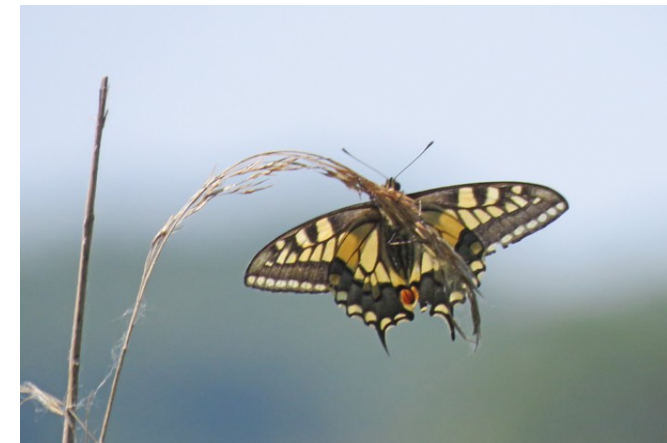
10 years in Bolivia
Nick Acheson

February 24 2025

Nature in Shetland
Josh Jaggard

March 31 2025

Norfolk Butterflies
Francis Farrow



Swallowtail



Ox Eye Daisies

Abel Heath Project

Summary

Abel heath lies astride the parishes of Aylsham and Blickling, within the National Trust-owned Blickling estate. Over the centuries it has experienced a miscellany of uses and misuses, including common grazing, sand extraction, rubbish dumping and being sliced in half by a railway. The railway line has now been completely eradicated and Abel Heath now forms a rare example of an island of sandy heath surrounded by agricultural land. Management by the National Trust has saved the heath from being overgrown by non-heath species, which would cause it to lose its amenity value as a local access area and heath of conservation interest.

Objectives

In connection with the National Trust and the Norfolk Wildlife Trust in line with their scheme for "Putting local wildlife on the map", members of the Society endeavour to maintain a record of species throughout the season and map their distribution; help manage the Heath by bracken trampling, willow herb removal and trimming the gorse and blackthorn. We welcome anyone interested in participating in the scheme.

Who We Are

About Us

We are a friendly club of amateur enthusiasts who meet once a month and have the occasional field excursion. Anyone with an interest in wildlife is welcome to join us.

Where do we meet?

Friendship Hall, Cawston Road, Aylsham NR11 6DS

When do we meet?

Usually on the last Monday of every month at 7.30pm from September through to June.

Cost?

Annual membership (April to March) is £20 or visitors are welcome at £5 per meeting.

How to Join?

Just turn up at one of our meetings or

Contact Us

Phone: Dave on 01263 731968

email: aylshamwildlife@outlook.com

Web: www.aylshamwildlife.org.uk



Long-eared Owl

AYLSHAM & DISTRICT WILDLIFE SOCIETY



2024-25



Bee-eaters